



**BRUSSELS**  
invest & export



# SINGAPORE AT A GLANCE

*by Brussels Invest Export - Singapore*  
51 Goldhill Plaza #21-11/12 Singapore 308900  
E: [info@bruwex.sg](mailto:info@bruwex.sg) | T: +65 6251 0079

A very Happy New Year to our readers!

Upon request, our office will be glad to assist any Brussels or Walloon company interested to receive more detailed information on a topic mentioned hereunder. Information is presented in a summarized form and such newsletter will be distributed every month for the edition of the previous month (e.g. January edition will be distributed in February). Anyone who wants to have the full article on any of these topics should send an email to [info@bruwex.sg](mailto:info@bruwex.sg) with the date and heading of the article.

In this edition:

## GENERAL

### **13/12/2017 – Singapore no longer among world's 20 priciest cities for expats**

Singapore has fallen out of the 20 priciest cities in the world for expatriates, ranking 21<sup>st</sup> out of 262 cities surveyed by ECA International. The global rankings this year have been topped by two African cities. Khartoum made the jump from the 21<sup>st</sup> to second, and the Angolan port city of Luanda is now the most expensive in the world. "The cost of goods typically purchased by international assignees in Luanda, which was already high due to poor infrastructure and significant oil-fuelled demand, continues to be pushed even higher. The Angolan kwanza is increasingly overvalued, which pushes up relative costs; while the ongoing weakness of the black-market exchange rate has also inflated the price of imported goods," said Lee Quane, Asia regional director at ECA International. Living costs such as housing rental, utilities (electricity, gas and water), car purchases and school fees are not included in the survey, as such items can make a significant difference to expenses, but are usually compensated for separately in expatriate packages.

## Top 20 most expensive

### Global ranking

LOCATION	2017	2016
Luanda	1	2
Khartoum	2	21
Zurich	3	3
Geneva	4	4
Basel	5	6
Bern	6	8
Oslo	7	14
Tokyo	8	1
Hong Kong	9	11
Stavanger	10	20
Seoul	11	12
Shanghai	12	13
Tel Aviv	13	19
Copenhagen	14	23
Jerusalem	15	22
Beijing	16	15
Kinshasa	17	10
Yokohama	18	5
Nagoya	19	7
Osaka	20	9

### Asia-Pacific ranking

LOCATION	2017	2016
Tokyo	1	1
Hong Kong	2	5
Seoul	3	6
Shanghai	4	7
Beijing	5	8
Yokohama	6	2
Nagoya	7	3
Osaka	8	4
<b>Singapore</b>	<b>9</b>	<b>9</b>
Busan	10	10
Guangzhou	11	11
Ulsan	12	12
Macau	13	13
Shenzhen	14	14
Taipei	15	15
Chengdu	16	17
Dalian	17	16
Qingdao	18	21
Nanjing	19	18
Xi'an	20	22

Source: ECA International

## CURRENT & UPCOMING PROJECT

### 03/12/2017 – Decades of groundwork for T5 to take flight

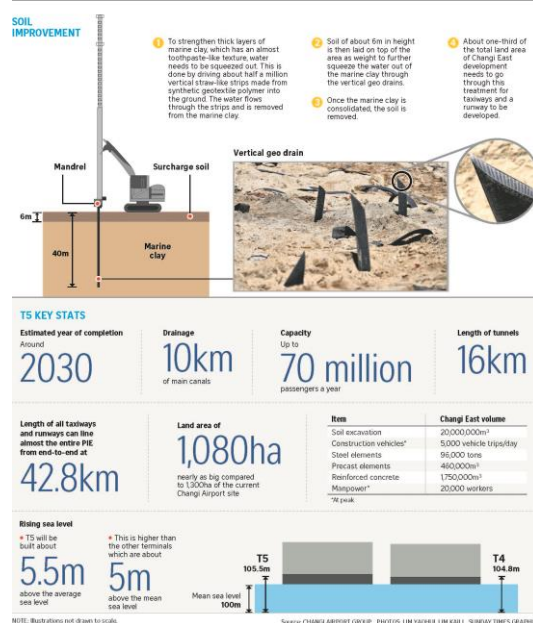
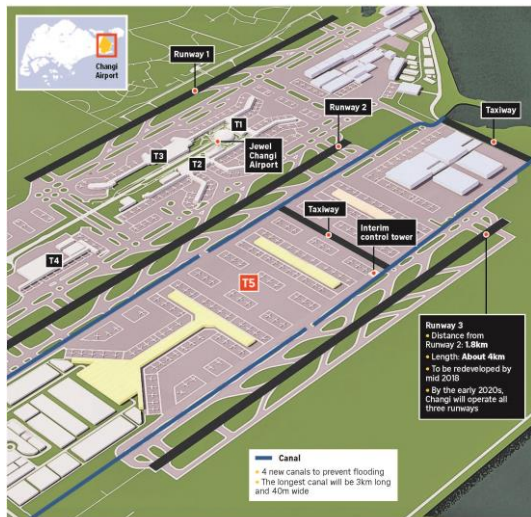
### 03/12/2017 – Travellers may have to pay fees to help fund Changi T5

Actual ground works at Changi East started just three years ago, but the T5 story dates back almost three decades ago. The move from Paya Lebar to Changi in 1981 was an enormous task: 550 buildings demolished, 4,500 graves exhumed, 200ha of swamp land cleared, one airbase that was built during the Japanese Occupation removed, and 870ha of land reclaimed. One of the earliest plans was to build three passenger terminals – with a total handling capacity of 30 million passengers a year – at the current airport site. There was foresight then to see the need for fourth, fifth and even sixth terminal at the Changi East site. But the fourth terminal was not built as initially planned; Terminal 4 (T4) opened last month where the Budget Terminal used to be located. Whereas Terminal 5 (T5) is slated for completion around 2030. Fees and charges for travellers flying out of Changi Airport and airlines operating there could increase from as

early as next year to help pay for the future T5. The total fee for travellers flying from Changi Airport, made up of components such as security tax, is currently \$34. This was last increased in April 2013, from \$28. Transit passengers pay \$6. The rest of the Changi East bill will be shared by Changi Airport Group (CAG) – a corporate entity which operates the airport – and other aviation stakeholders.

## Planning a mega terminal

When completed around 2030, T5 will be connected to the current Changi Airport via a network of taxiways and tunnels.



## 09/12/2017 – KL-Singapore high-speed rail to run half hourly

The Kuala Lumpur-Singapore non-stop high-speed rail (HSR) will run from Bandar Malaysia, at the outskirts of downtown Kuala Lumpur, to Jurong East in Singapore every 30 minutes. MyHSR, a unit of Malaysia's Ministry of Finance, is working with Singapore's Land Transport Authority on the HSR project. Eight stations will be built along the 350km line – only 15km of which will be in Singapore. MyHSR Corp project delivery director Mark Loader said the project is due to start at the end of next year and is scheduled for completion in 2026.

# LOGISTIC

## 10/12/2017 – Keeping the ships sailing in – why the Tuas mega port matters

It is touted as the upcoming site of mega port – Tuas in the west where Singapore's city port operations, including Tanjong Pagar and Pasir Panjang, will relocate to. The move will free up land for the Greater Southern Waterfront development. First announced by then Transport Minister Lui Tuck Yew in 2012, the mega port will consolidate all of Singapore's port operations in Tuas. It will open in four phases, with the first berths expected to be operational in 2021. The multibillion-dollar Tuas project will increase the port's capacity to 65 million TEUs (twenty-foot equivalent units) of cargo, more than double what the port handles last year. This expansion is the latest in a series of bold moves to grow Singapore's port by building ahead of demand. Tuas, in fact, was considered as a potential location before Pasir Panjang was chosen in the early 1990s.



## TECHNOLOGY

### 05/12/2017 – New S\$42.4m Singtel-NTU lab set up to develop commercialise digital tech

The new Singtel Cognitive and AI Lab for Enterprises (Scale@NTU), focusing on artificial intelligence (AI), data analytics, robotics and the Internet of Things, is a five-year collaboration between Singtel and Nanyang Technological University (NTU) to develop and commercialise such technology for use in areas such as public safety, transportation and healthcare. Singtel will also work with the Agency for Science, Technology and Research (A\*Star) on a master research collaboration agreement. Under this agreement, they will work together to use robots and automation to improve manpower efficiency.

## EVENT PICTURE



### Belgian Beer Tasting 2017 at Media Bar - JW Marriott South Beach Hotel

More than 20 types of Belgian beer from five local distributors: The Drinking Partners, Beer Importers & Distributors, Pacific Beverages, TSA Wines and Epicurean Nomads under one roof.

Also present: Three new craft beers from Brussels, namely En Stoemelings "Curieuse Neus", Brussels Beer Project and Marcelin Beers. A joint event by KBC Bank, Flanders Investment & Trade, Brussels Invest Export and AWEX Singapore. For more photos, please click [here](#).

**PRODUCTS & COMPANIES**



**Rolph&Rolph Desserts are now available in Singapore!**

Click here to order:

[Mini Verrine Duo Belgian Dark Chocolate and Passion Fruit Meringue](#)

[Mini Verrine Duo Praline Belgian Dark Chocolate and Raspberry White Chocolate](#)



**LISAM SYSTEMS**

**19 Keppel Road #07-01 Jit Poh Building Singapore 089058 (TEL: +65 6493 2311)**

**Lisam Systems** is a global provider of EH&S compliance management software solutions and services, operating from offices worldwide. By combining an easy-to-use, flexible technology built on the Microsoft .NET platform, with the latest regulatory content, Lisam brings innovative, affordable and timely solutions to solve EH&S challenges faced by manufacturers, distributors and users of chemical products. Working with industry associations and partners, Lisam has developed, proprietary, vertical EH&S solutions for the chemical, specialty chemical, cosmetics, aromas and flavorings, detergents, paints, coverings, coatings, plastics and energy industries. Today, more than a thousand clients in these industries rely on Lisam's flagship software, ExESS® to manage their compliant safety data sheets (SDS) and labels, designed for all major commercial markets and available in more than 50 languages.

-----

The website of the Belgian Embassy features a list of Belgian products and services in Singapore. With your help we would like to keep this list updated. If you want your product or service included, please send an email to [singapore@diplobel.fed.be](mailto:singapore@diplobel.fed.be) with the following details:

- Company name (including the product / service offered)
- Address
- Website / Facebook-page

Please make sure to include "BE-list" in the subject header and your product will be included soon!



*Disclaimer of liability:*

*The purpose of this newsletter is to provide information our office collects from various sources. Neither the Brussels Invest & Export (BIE/BRU) nor AWEX, nor the representative office based in Singapore, nor any of the staff, nor any company or person mentioned in the following pages makes any warranty, express or implied, including the warranties of merchant-ability and fitness for particular purpose, or assumes any legal liability or responsibility for the accuracy, completeness or usefulness of any information, apparatus, product, or process disclosed or represents that its use would not infringe privately owned rights.*